

COMPACT, POWERFUL, AND PRODUCTIVE WITH ADVANCED DESIGN AND QUALITY CONSTRUCTION

COMPACT, POWERFUL, AND PRODUCTIVE WITH ADVANCED DESIGN AND QUALITY CONSTRUCTION

**RAGNARTECH**  
Practica Novitates

**CHIPPERS**

# 1624 CHIPPER



- ▶ Chips up to 16" Diameter Trees with 2 Feed
- Rolls: Top and Bottom
- ▶ Feed Opening 16" X 24"
- ▶ 140 Hp Doosan Engine

### OPTIONS:

- ▶ Log Loader with 21' of reach
- ▶ 3 Hydraulic Outriggers
- ▶ Tracks
- ▶ Turntable



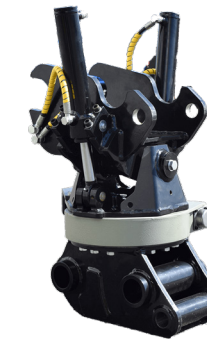
RagnarTech attachments are designed to go on a variety of machines including:  
Kubota, CAT, BobCat, John Deere, Hitachi, and many more.



GRAPPLE



GRAPPLE SHEAR



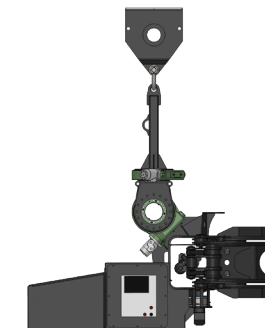
TILTROTATOR



GRAPPLE SAW



SPLIT MAX



SELF POWERED GRAPPLE SAW

RagnarTech offers a full line of excavator attachments, serving as the exclusive US dealer for the European Manufacturer JAK. Distributor inquiries welcome.



**RAGNARTECH**  
Practica Novitates

[RAGNARTECH-INC.COM](http://RAGNARTECH-INC.COM)

**RAGNARTECH**  
Practica Novitates

[RAGNARTECH-INC.COM](http://RAGNARTECH-INC.COM) • [INFO@RAGNARTECH-INC.COM](mailto:INFO@RAGNARTECH-INC.COM)  
603.244.7575 • 44 IRON HORSE DRIVE, FREMONT, NH 03044

Exclusive US dealer for the European Manufacturer **Ufkes Greentec**



## 2636 CHIPPER



- ▶ Chips up to 26" Diameter Trees
- ▶ Feed Opening 26" x 36"
- ▶ 4 Feed Rolls: Top, Bottom, Side
- ▶ Hydraulically Foldable Feed Chute
- ▶ 425 Hp - 670 Hp John Deere Engine
- ▶ Hydraulically Adjustable Flexair Reversal Fan

### OPTIONS:

- ▶ Heavy Duty 3-Rows Forged Steel In-feed Chain Table
- ▶ Track Options: Rubber on Steel, Steel, or Rubber
- ▶ 28' Crane with Optional Operators Cab
- ▶ On Board Hydraulic Wood Splitter
- ▶ Top or End Load Chutes



## 2242 CHIPPER



- ▶ Chips up to 22" Diameter Trees
- ▶ Feed Opening 22" x 42"
- ▶ 4 Feed Rolls: Top, Bottom, Side
- ▶ Hydraulically Foldable Feed Chute
- ▶ 425 Hp John Deere Engine
- ▶ Hydraulically Adjustable Flexair Reversal Fan

### OPTIONS:

- ▶ Portable or Track Style
- ▶ Track Options: Rubber on Steel, Steel, or Rubber
- ▶ 28' Crane with optional wireless remote control
- ▶ Top or End Load Chutes



## 1828 CHIPPER



- ▶ Chips up to 18" diameter trees
- ▶ Feed Opening 18" x 28"
- ▶ 4 Feed Rolls: Top, Bottom, Side
- ▶ Hydraulically foldable feed chute
- ▶ 300 Hp John Deere Engine
- ▶ Hydraulic Adjustable Flexair Reversal Fan

### OPTIONS:

- ▶ Heavy Duty 3-Rows Forged Steel In-feed Chain Table
- ▶ Top and End Load Chute
- ▶ 28' Crane with optional wireless remote control

### TRACK OPTIONS:

- ▶ Rubber Or Steel Tracks
- ▶ Track with optional custom trailer allowing unit to be run on trailer
- ▶ Torsional triple axles, electric brakes, outriggers, quick lock down of machine
- ▶ Loading ramps included

### PORTABLE OPTIONS:

- ▶ Hydraulically pivoting tow bar, 90 degree left or right to allow a truck with a rear mounted loader to feed chipper
- ▶ Torsional dual axles, electric brakes, hydraulic outriggers
- ▶ Heavy Duty 3-Rows Forged Steel In-feed Chain Table

