

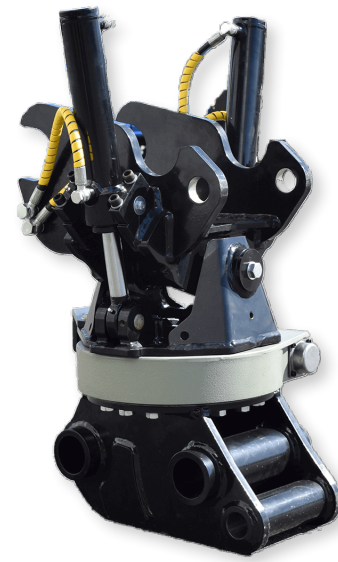
# TILTROTATOR

The **RAGNARTECH TILTROTATOR SERIES** is designed to be cost-effective, compact and strong, with machine-specific quick couplings at the top and bottom. It allows the machine thumb to remain in place, while two double-acting cylinders provide ample force up to 50 degrees in each direction.

The rotation device is bolted onto each TiltRotator for full continuous 360-degree rotation, with easy installation requiring only 2 hydraulic circuits and no electric controls involved. This makes them suitable for wet and submerged work, and are specifically designed to utilize the iDig guidance system.



◀ READ MORE HERE



**4-TON**  
390 LBS

**6-TON**  
440 LBS

**8-TON**  
765 LBS

# CHIPPERS

RagnarTech attachments are designed to go on a variety of machines, including: Kubota, CAT, BobCat, John Deere, Hitachi, and many more.

RagnarTech has a full line of high-quality, high-performance tree care chippers, serving as the exclusive US dealer for the European manufacturer, Ufkes Greentec. Distributor inquiries welcome.

**2636**



**2242**



**1828**



**1624**



**COMPACT • POWERFUL • PRODUCTIVE**  
**WITH ADVANCED DESIGN AND QUALITY CONSTRUCTION**

**RAGNARTECH**  
Practica Novitates

RAGNARTECH-INC.COM • INFO@RAGNARTECH-INC.COM  
603.244.7575 • 44 IRON HORSE DRIVE, FREMONT NH 03044

**RAGNARTECH**  
Practica Novitates

# ATTACHMENTS

Innovative Products for the  
Construction & Forestry Industries



**NEW!** UPDATED PRODUCTS  
& MODEL NUMBERS

**RAGNARTECH**  
Practica Novitates

IMPROVING YOUR

**RAGNARTECH**  
Practica Novitates

KUBOTA EXPERIENCE

# GRAPPLE SHEARS

**GRAPPLE SHEARS** are constructed from durableHardox material for efficient and reliable timber harvesting. Bolt-on blade can be quickly swapped out to provide a dedicated grapple device.

- OPTIONAL:**
- ▶ 360-degree rotator
  - ▶ Collector attachment enables the operator to securely grasp small trees while opening the grapple to make the next cut
  - ▶ Hydraulic bar saw option available for the 250 and 300 models for up to 24” cuts
  - ▶ Separate Circuit Dual Guillotine knives for larger diameter and controlled shearing



◀ **READ MORE HERE**



MODEL	200	250	300	400
WITHOUT OPTIONS	545 lbs	790 lbs	1,256 lbs	4,300 lbs
CUTTING DIAMETER	8”	10”	12”	18”
GRAPPLE OPENING	24”	28”	33”	40”
EXCAVATORS	2-5 ton	6-12 ton	12-20 ton	25-35 ton

# SPLITMAX

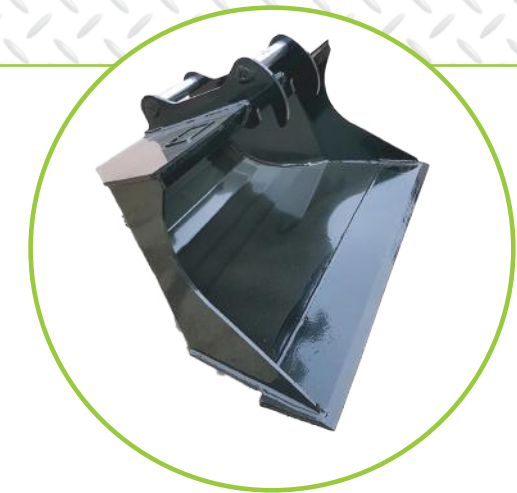
The **SPLITMAX** series is designed for excavators from 8-40 tons, allowing for easy attachment in minutes via a machine specific coupler. The heavy duty construction utilizes high tensile and abrasive resistant steel to ensure versatility and durability. Dual 5000psi hydraulic cylinders make splitting the largest logs and stumps effortless, while the large hardened pins and bushing with line bored construction ensures a perfect fit. Additionally, a backplate allows for grading and pushing material, and options such as bolt-in replaceable tips and a wear liner if used to excavate stumps are available. The machine mounting bracket is easily adaptable to any style quick disconnect coupling and machine, while all high forces are internally contained, causing no stress on the machine.



◀ **READ MORE HERE**



MODEL	SM30	SM48	SM60
WEIGHT (LBS)	1,450	3,200	4,600
OPENING DIAMETER	30”	48”	60”
CYLINDER BORE	4” bore	5” bore	6” bore
EXCAVATORS	6-12 ton	14-30 ton	25-40 ton



# GRADING BUCKETS

	4-TON	6-TON	8-TON
VOLUME	175-Liters	240-Liters	300-Liters
WIDTH	44”	48”	52”
TEETH	Hardox 450	Hardox 450	Hardox 450

Tapered For Use With TiltRotator



# DIGGING BUCKETS

	4-TON	6-TON	8-TON
VOLUME	200-Liters	285-Liters	380-Liters
WIDTH	25.6”	29.5”	31.5”
TEETH	J200	J200	J250

# SAWMASTER

The **SAWMASTER** grapple and bar saw are designed for telehandlers, excavators, and a variety of other construction equipment. With a cutting capacity up to 40 inches the SawMaster is a strong and tested grapple with a variety of quick disconnects available. Ideal for land clearing, pruning, roadside vegetation management, pasture edge maintenance, and forest thinning.



◀ **READ MORE HERE**



MODEL	1200	1600	2000
WEIGHT (LBS)	2,200	2,700	3,200
MAX LOAD (LBS)	5,500	9,000	13,000
CUTTING DIAMETER	24”	28”	40”

# GRAPPLES

Ragnartech’s fixed 360-degree rotation **GRAPPLES** are constructed from highly durable Hardox Steel, featuring parts common to the JAK shear base platform. The grapples are extremely rugged, preventing deformation of the open grapple arms, while optional knives can be inserted for cutting wood. The excavator mounting bracket is bolted on and designed for all types of configurations. Optional angular excavator brackets are available for transforming the grapple into a powerful harvesting tool. Dual high-pressure cylinders offer immense clamping force, making this Grapple a versatile and reliable tool.



◀ **READ MORE HERE**



MODEL	200	250	300	400
WEIGHT (LBS)	595	2,700	3,200	3,200
WORKING PRESSURE	3000-4500 PSI			
GRAPPLE OPENING	24”	28”	33”	40”
EXCAVATORS	4-6 ton	8-12 ton	12-25 ton	25-35 ton



# LOGBUDDY

Extends the reach and improves the handling and stacking of logs / trees while facilitating quick and easy connection of a log grapple. Available with optional rotator and grapples to fit all excavators and material handlers from 5-40 ton. Custom versions available for skid steer machines as well.



# GRADING BEAM

The RagnarTech Grading Beam is designed with Hardox for exceptional durability and strength. It is easy to connect with a machine specific bolt on mounting bracket, and features dual grading edges with one side for scooping material.